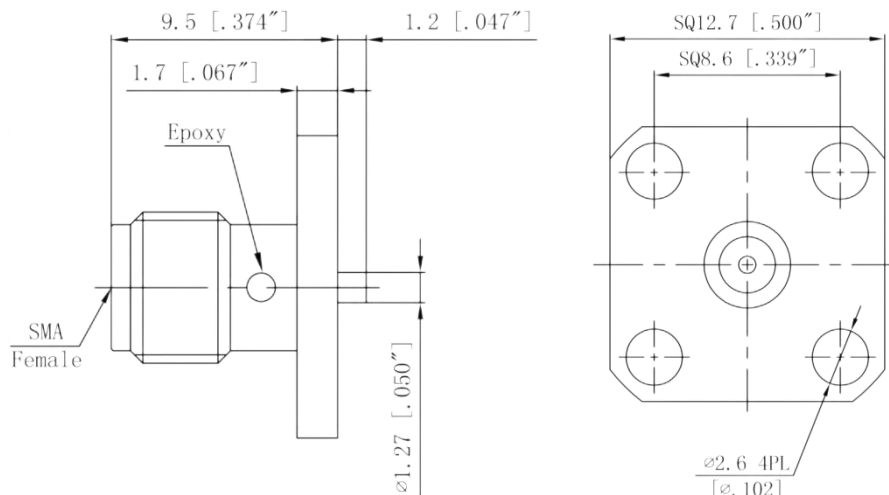


射频同轴连接器/ RF Coaxial Connector

XQY-SMA-KFD152

项目 Project	指标 Indicators
产品名称 Product Name	射频同轴连接器/RF Coaxial Connector
频率范围 Frequency Range	DC-8 GHz
驻波比 VSWR	1.15:1 (max)
阻抗 Impedance	50 Ω
插入损耗 Insertion Loss	0.1 dB (max)
介质耐电压 Dielectric withstand voltage	1000 V
使用寿命 Service life	≥ 500
绝缘电阻 Insulation Resistance	$\geq 5000M\Omega$
接头类型 connector type	SMA-Female
工作温度 Operation Temperature	-55°C ~ +165°C
内导体材质 Inner conductor material	铍青铜 镀金 Beryllium bronze Gold plating
外导体材质 External conductor material	黄铜 镀金 Gold plated brass
绝缘体 Insulator	PTFE
连接器类型 Connector type	空气线穿墙式连接器 Air Line Wall-through connector



注: 尺寸(mm/[英寸]), 一般公差(± 0.1)

Note: Dimensions (mm / [inch]), General tolerance (± 0.1)